

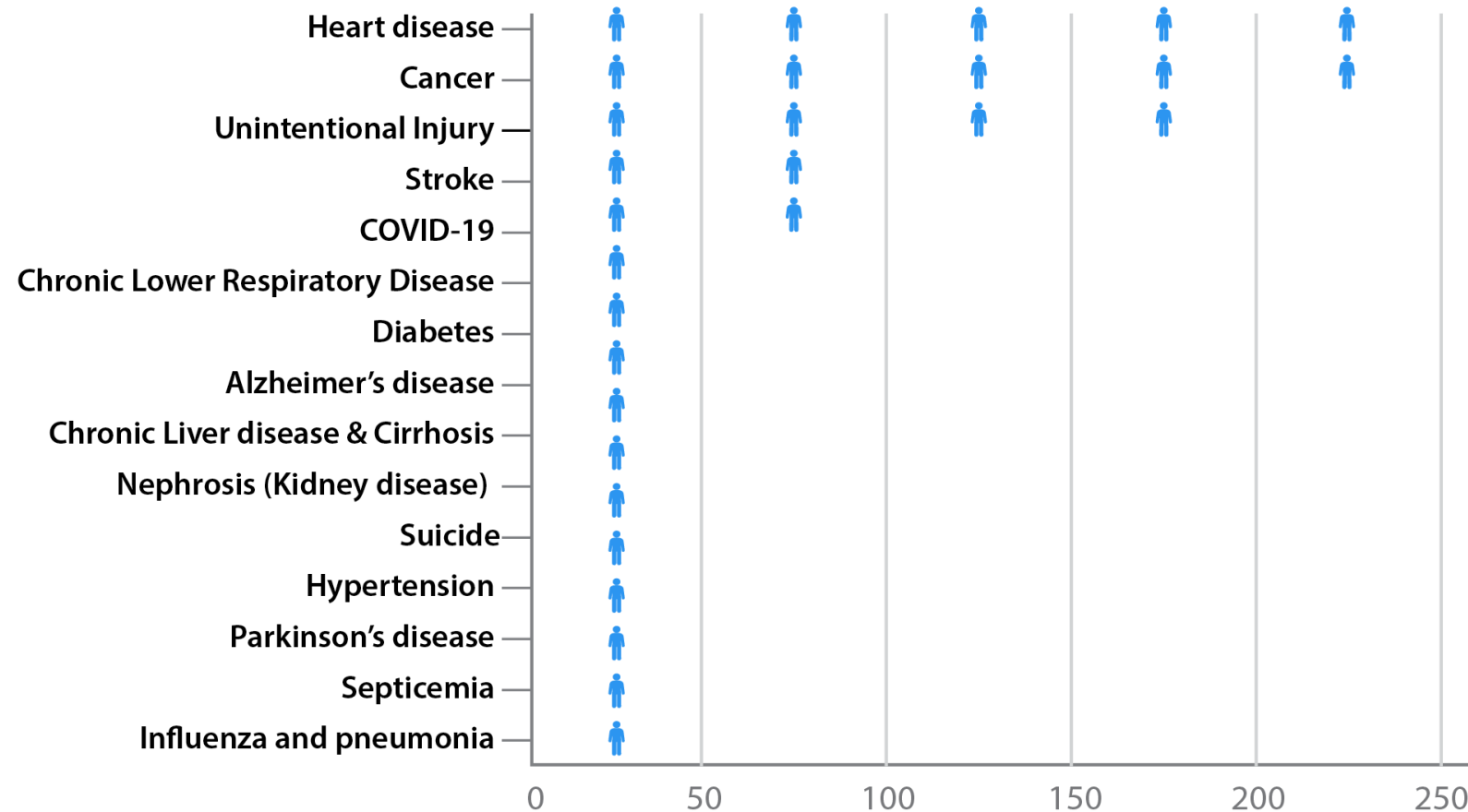
# THE STATE OF CANCER *in* FLORIDA



CCRAB ANNUAL REPORT 2024

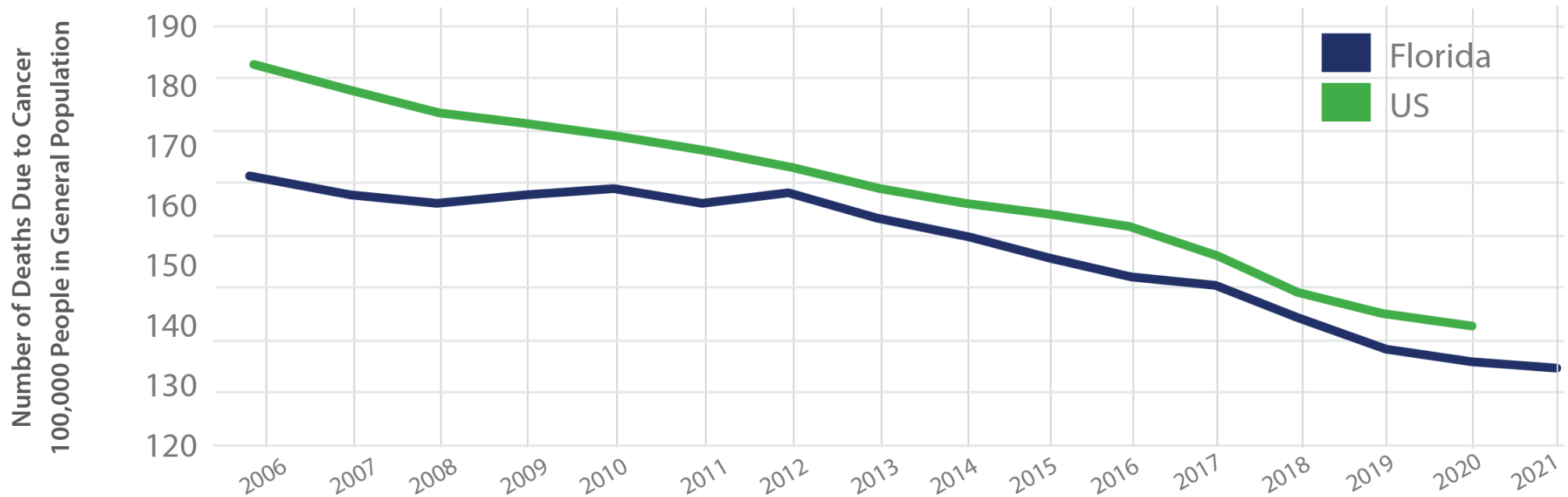
# Leading Causes of Death in Florida

Florida Crude Death Rates per 100,000 2022



Source: Florida Department of Health, Bureau of Vital Statistics

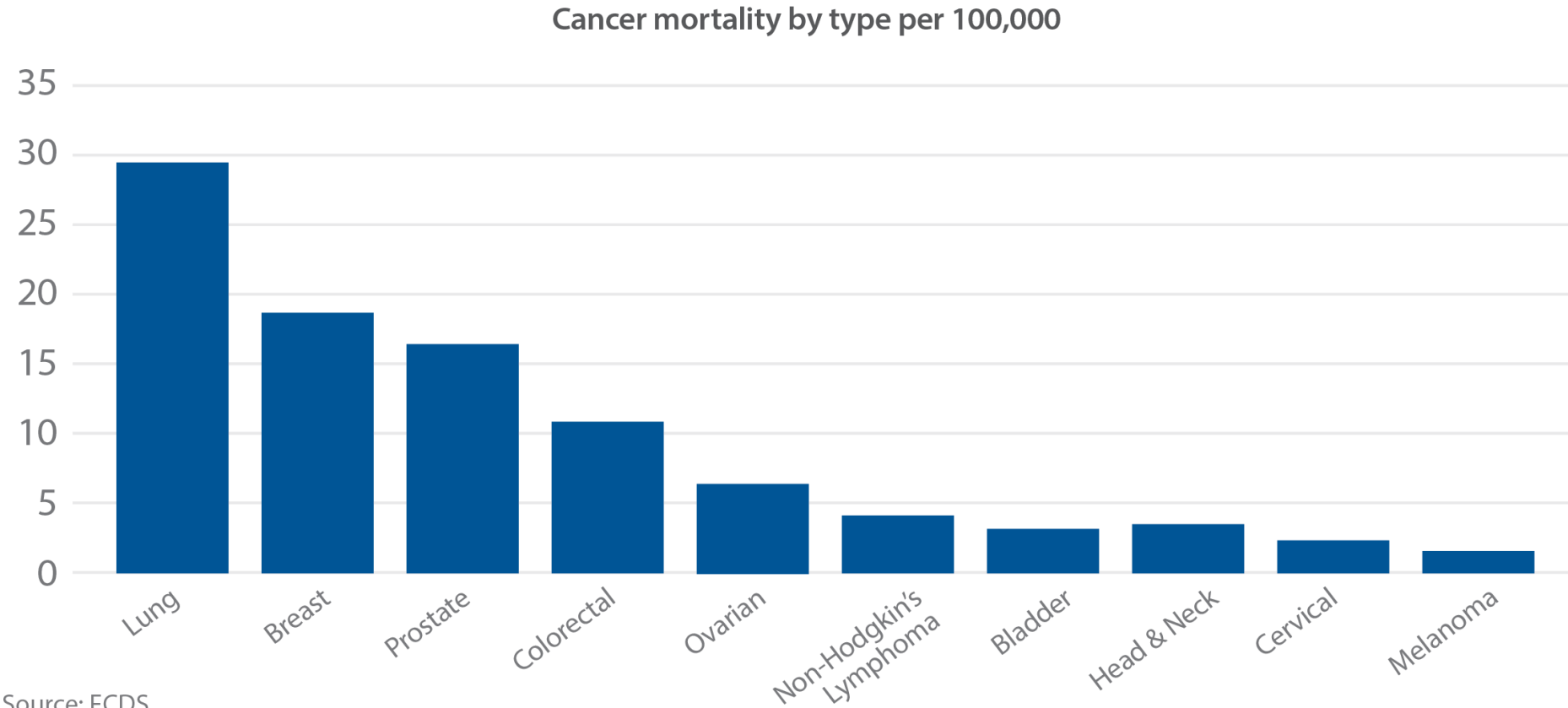
# Cancer Mortality in Florida vs. the United States



Source: FCDS and SEER

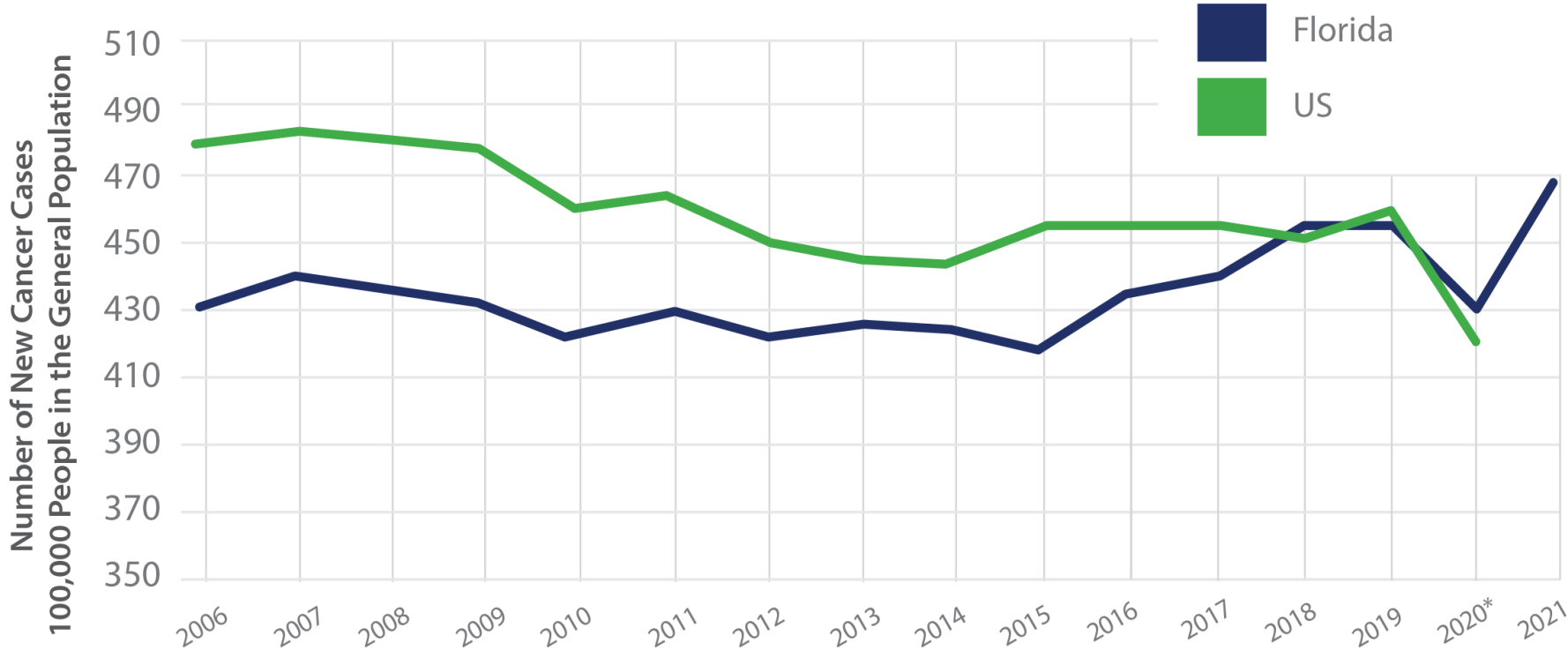
*The Centers for Disease Control and Prevention (CDC) has urged caution when interpreting 2020 data. The COVID-19 pandemic disrupted health services, leading to delays and reductions in cancer screening, diagnosis, and reporting to some central cancer registries. This may have contributed to the decline in new cancer cases for many sites in 2020.*

# Cancer Mortality by Type in Florida, 2021



Source: FCDS

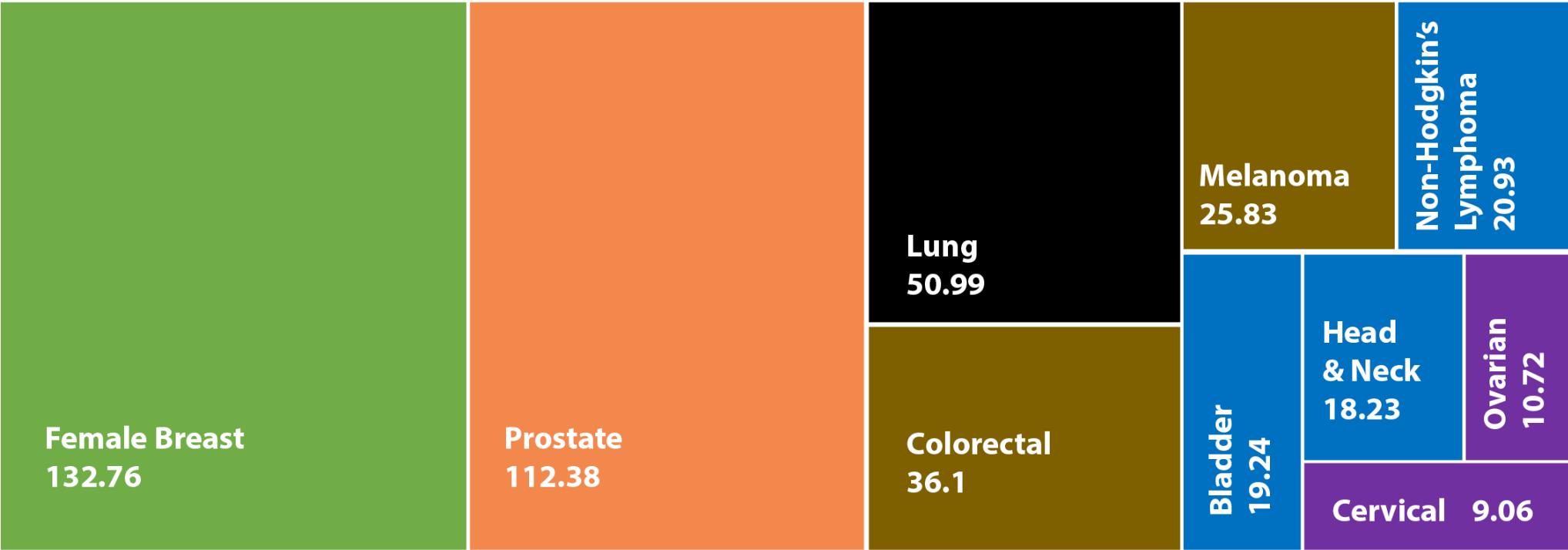
# Cancer Incidence in Florida vs. the United States



Sources: FCDS and SEER

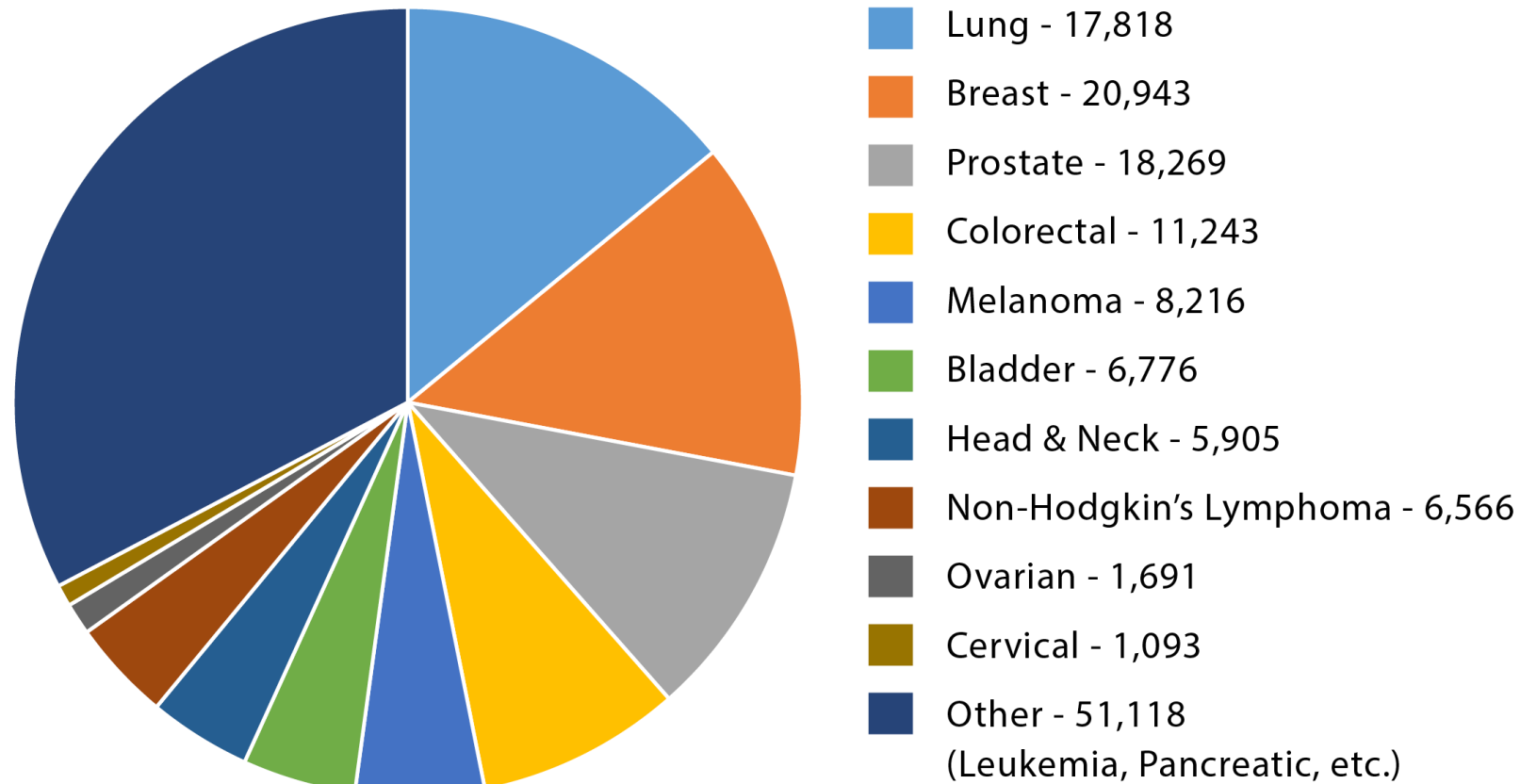
*The Centers for Disease Control and Prevention (CDC) has urged caution when interpreting 2020 data. The COVID-19 pandemic disrupted health services, leading to delays and reductions in cancer screening, diagnosis, and reporting to some central cancer registries. This may have contributed to the decline in new cancer cases for many sites in 2020. Rates increased in 2021 after the pandemic as people continued to get screened.*

# Age-Adjusted Cancer Incidence by Type in Florida



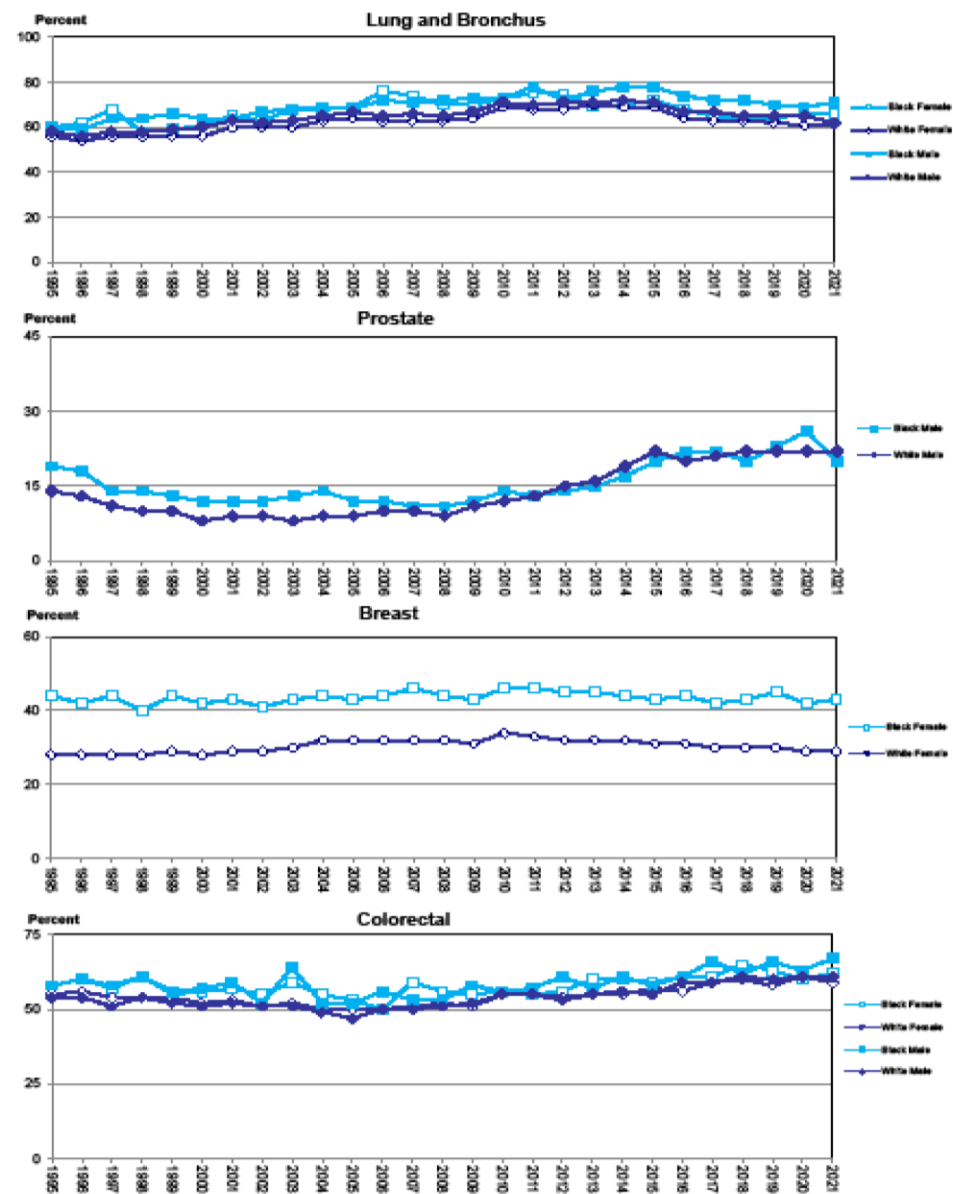
Source: FCDS, per 100,000 Floridians

# Crude Cancer Incidence (Number) by Cancer Type



Source: FCDS, per 100,000 Floridians

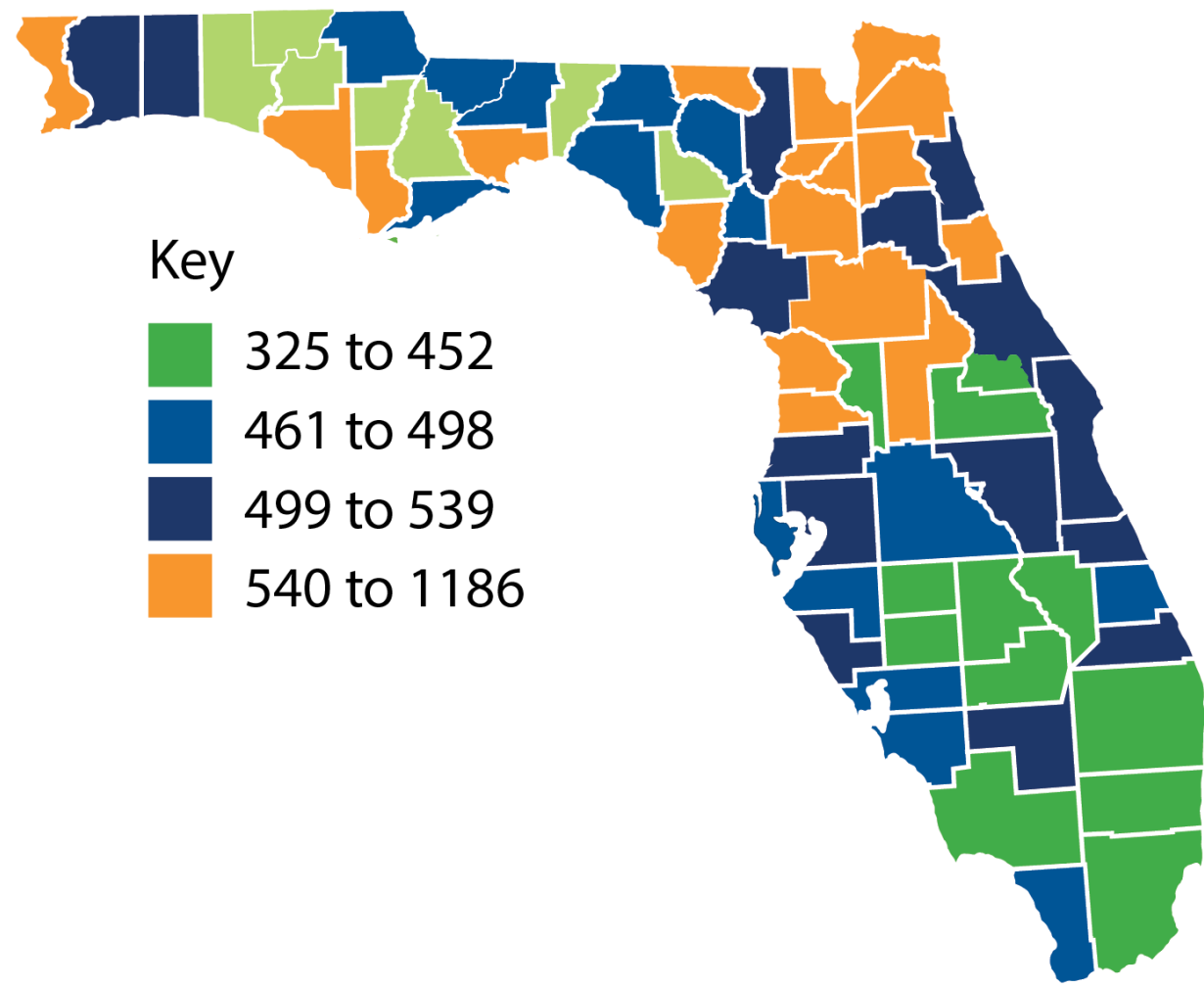
# Percentage of Advanced Stage Cancer Diagnosis in Florida by Sex and Race, 1995-2021



Advance stage includes all regional and distant disease  
Source: FCDS

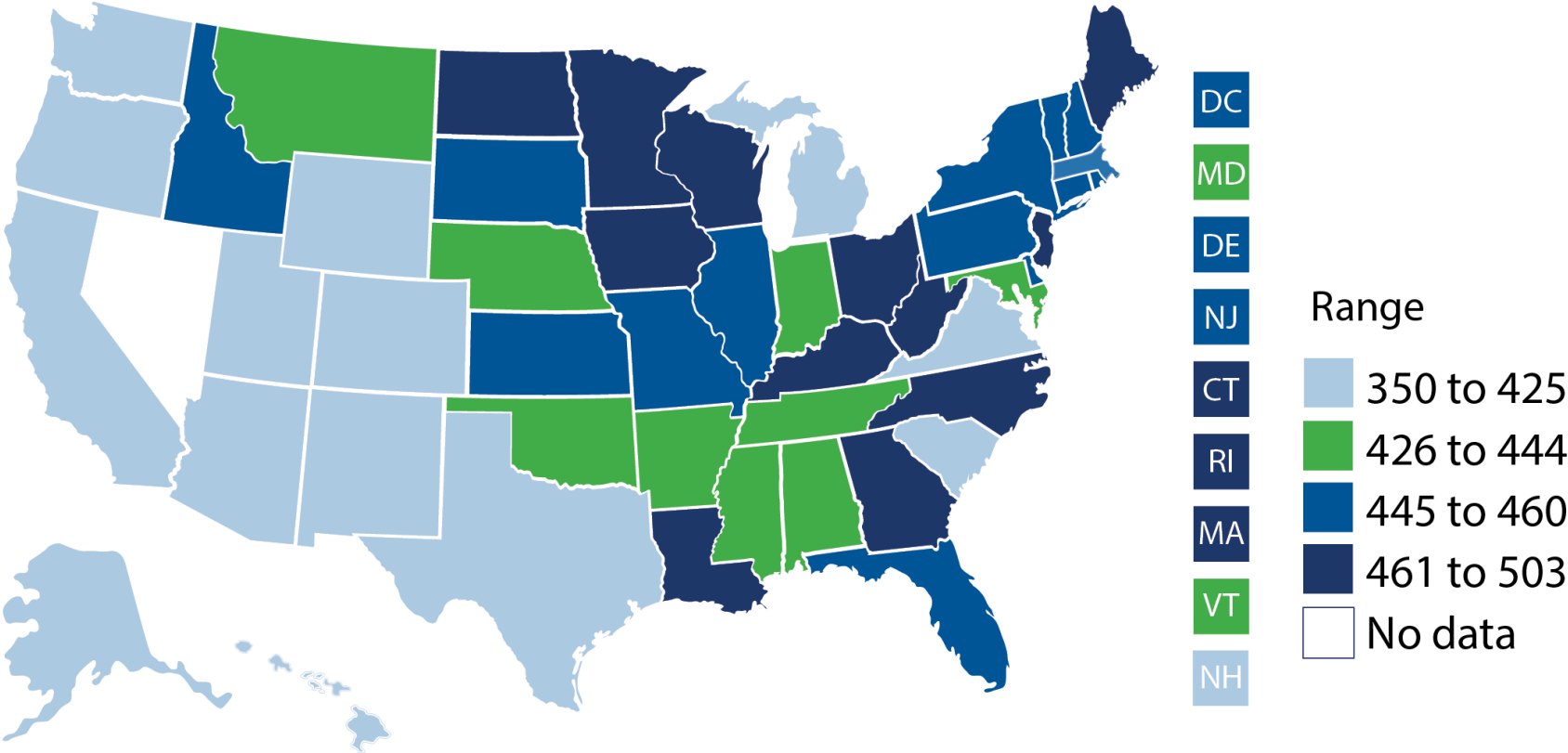


# Florida Map of Cancer Incidence by County



# US Map of Cancer Incidence

All types of cancer, all ages, all races/ethnicities, male and female,  
Rate per 100,000 people, 2020



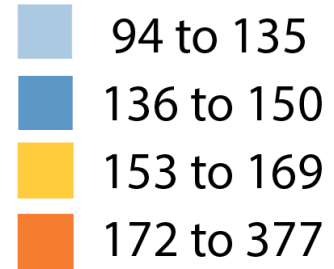
Source: CDC

# Florida Map of Cancer Mortality by County

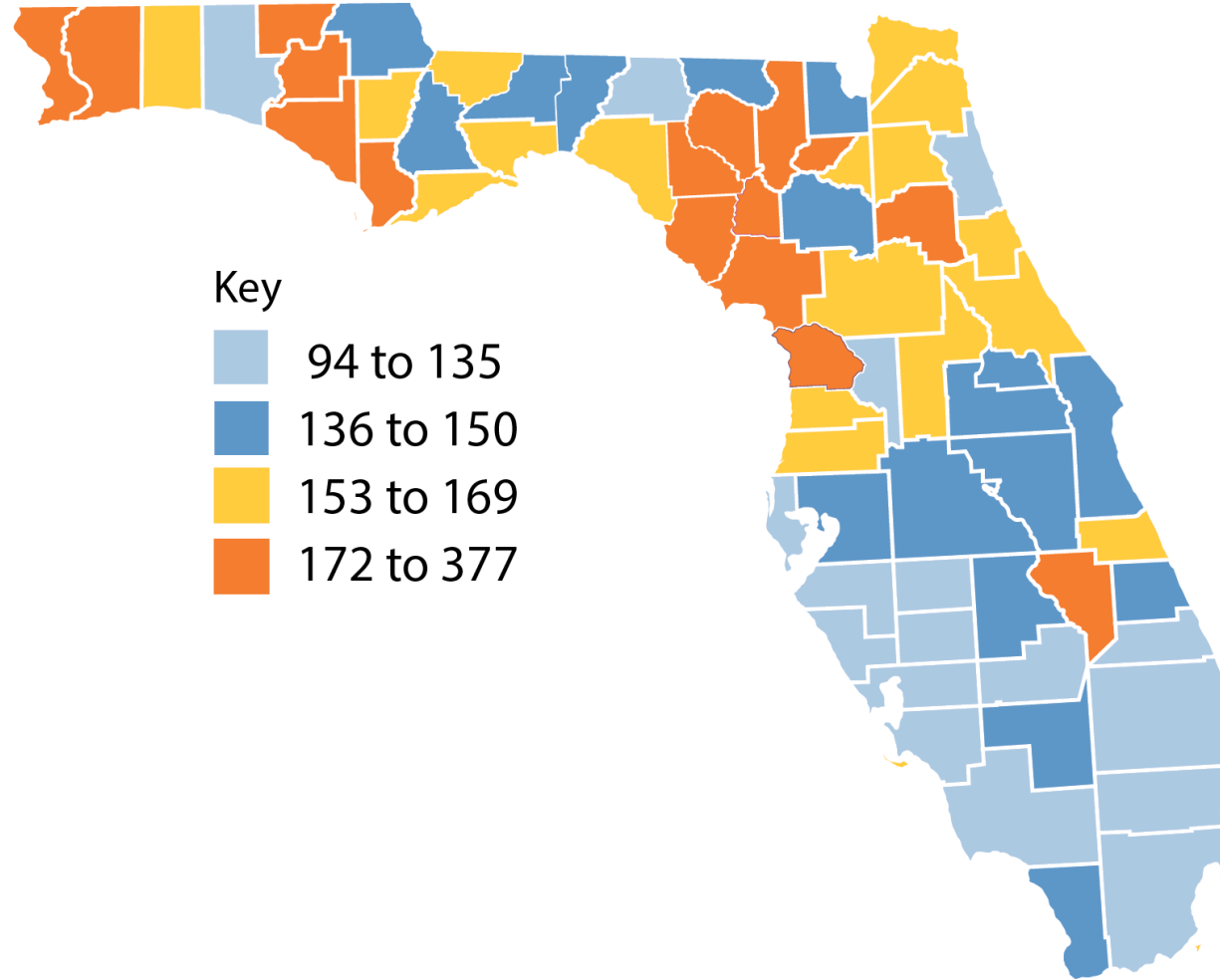
State/County Map  
for the Year 2021

Age-Adjusted for the  
Mortality Rate per  
1000,000 Floridians

Key



Source: FCDS

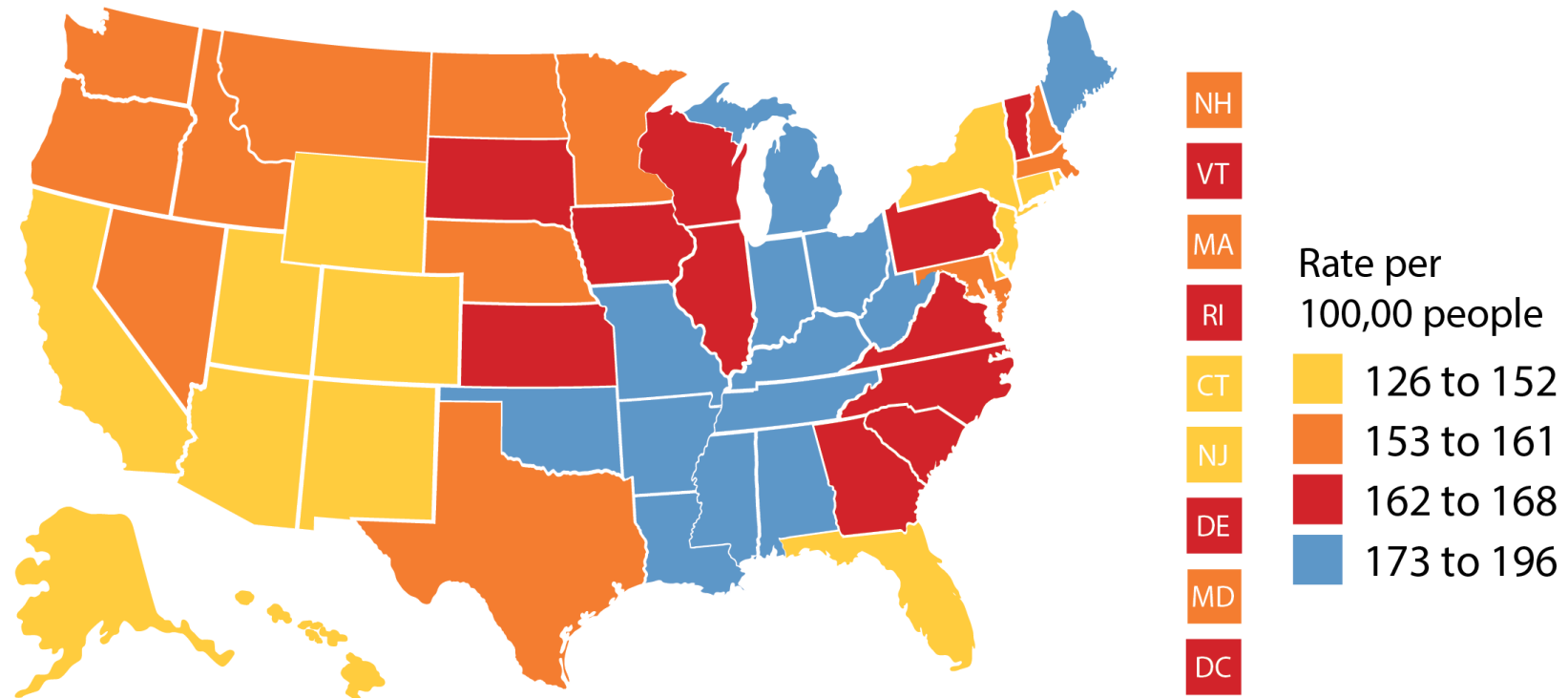


# US Map Cancer Mortality

Rate of Cancer Deaths in the United States, 2020

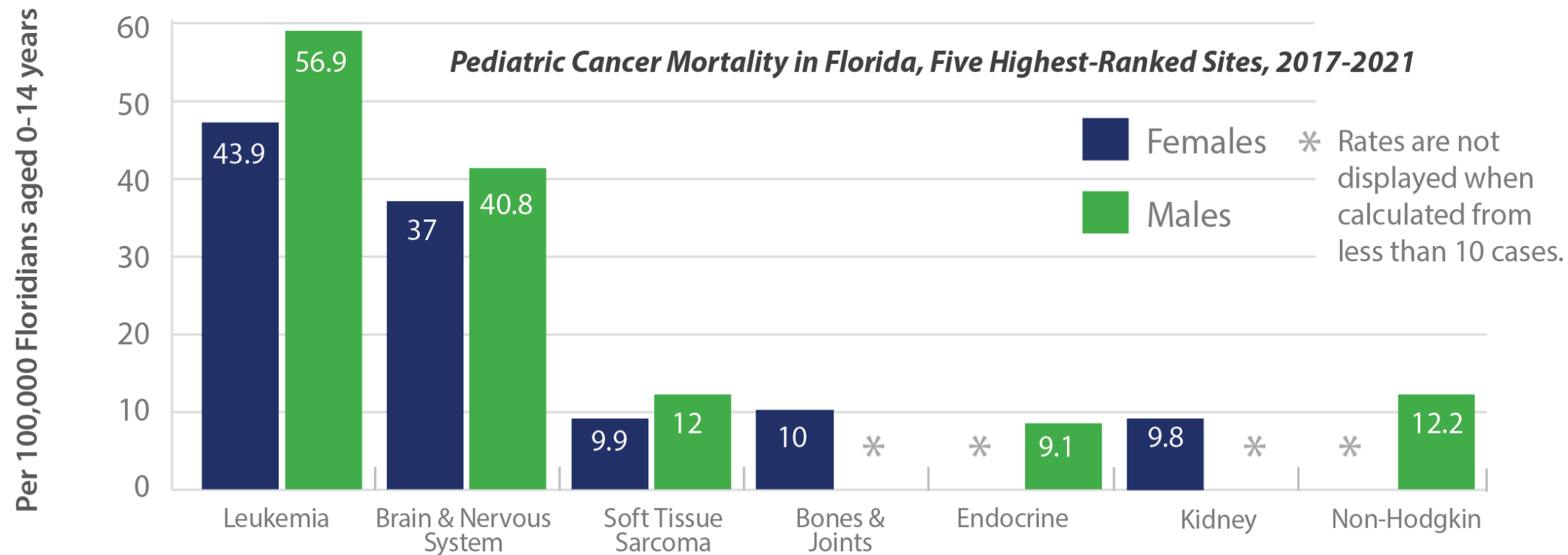
All types of cancer, all ages, all races/ethnicities, male and female

Within the US, Florida is in a group of states with lower cancer mortality.



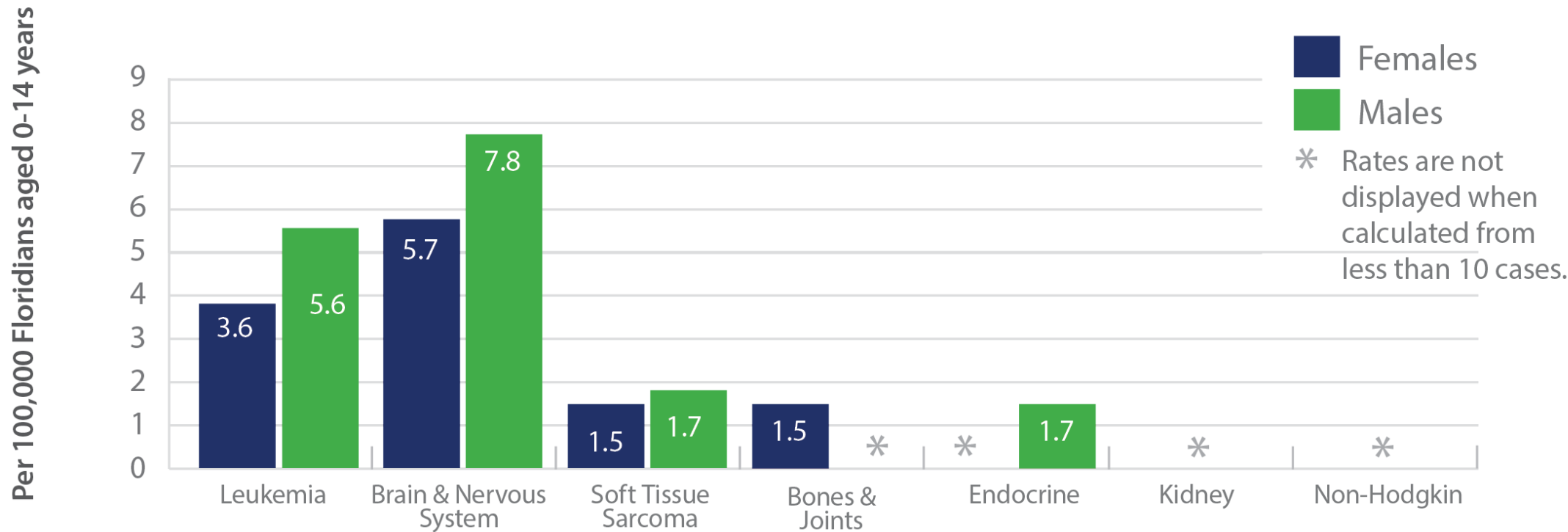
Source: CDC

# Pediatric Cancer Mortality in Florida



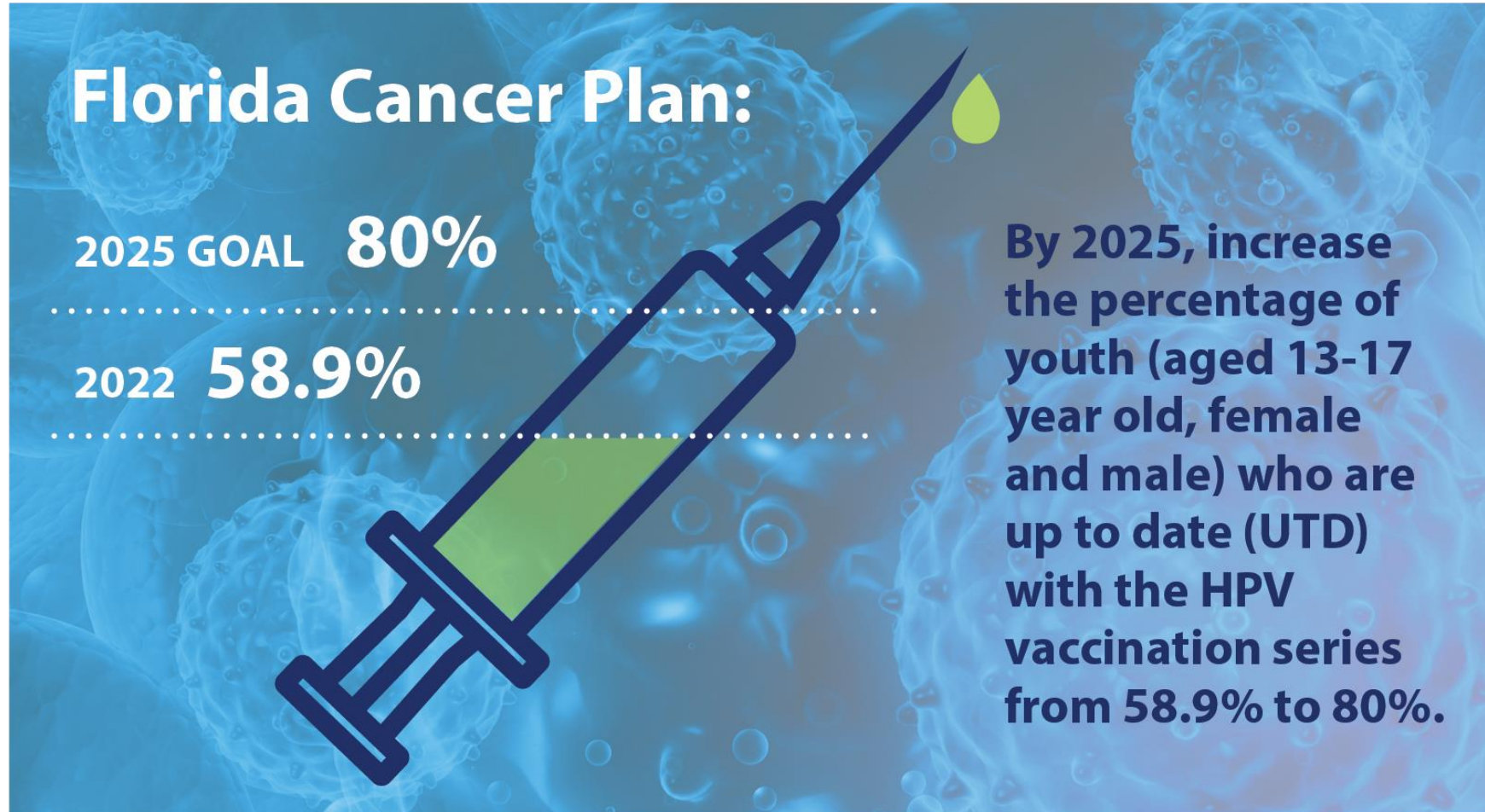
# Pediatric Cancer Incidence in Florida

*Pediatric Cancer Incidence in Florida, Five Highest-Ranked Sites, 2017-2021*



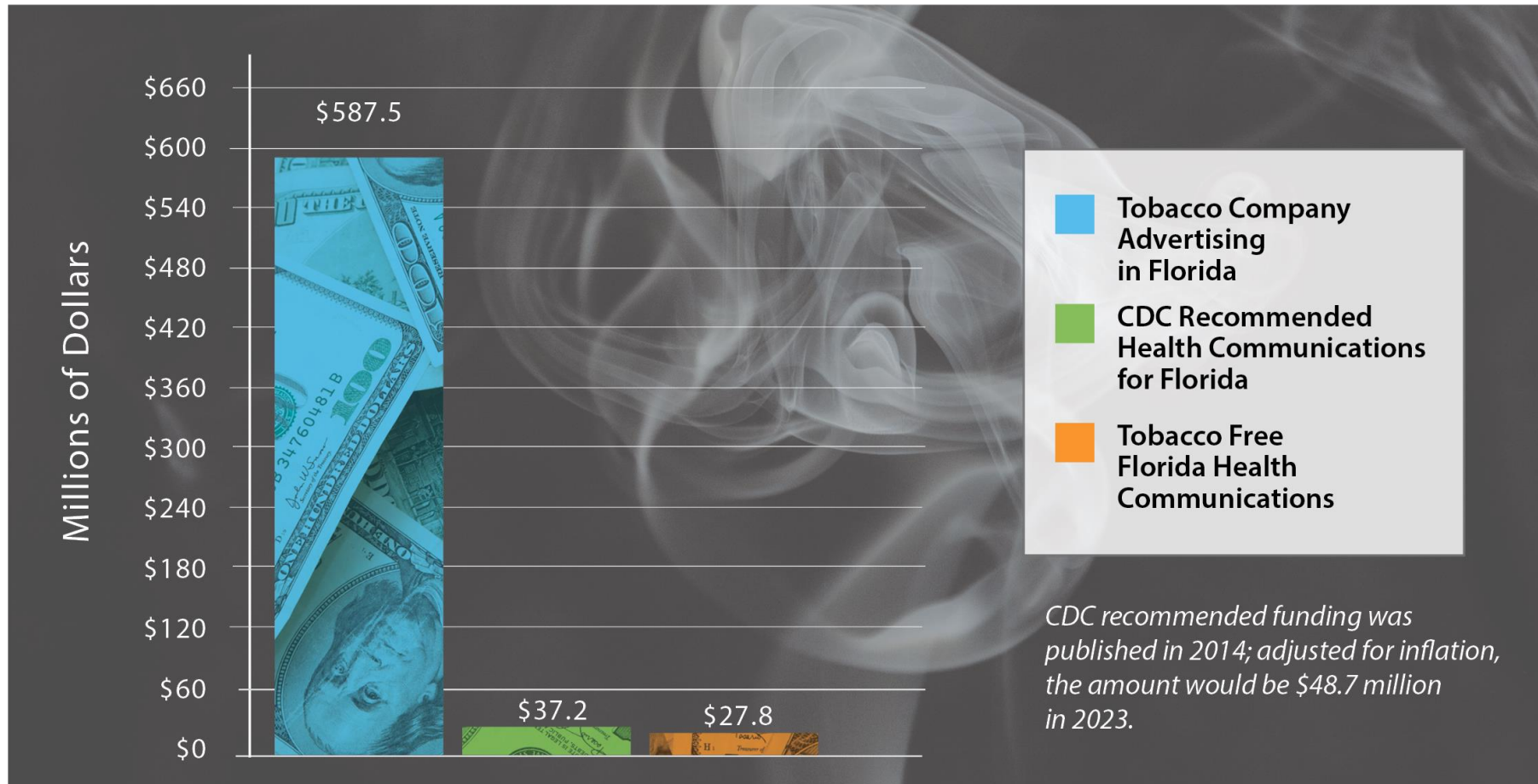
Source: FCDS

# HPV Vaccination in Florida





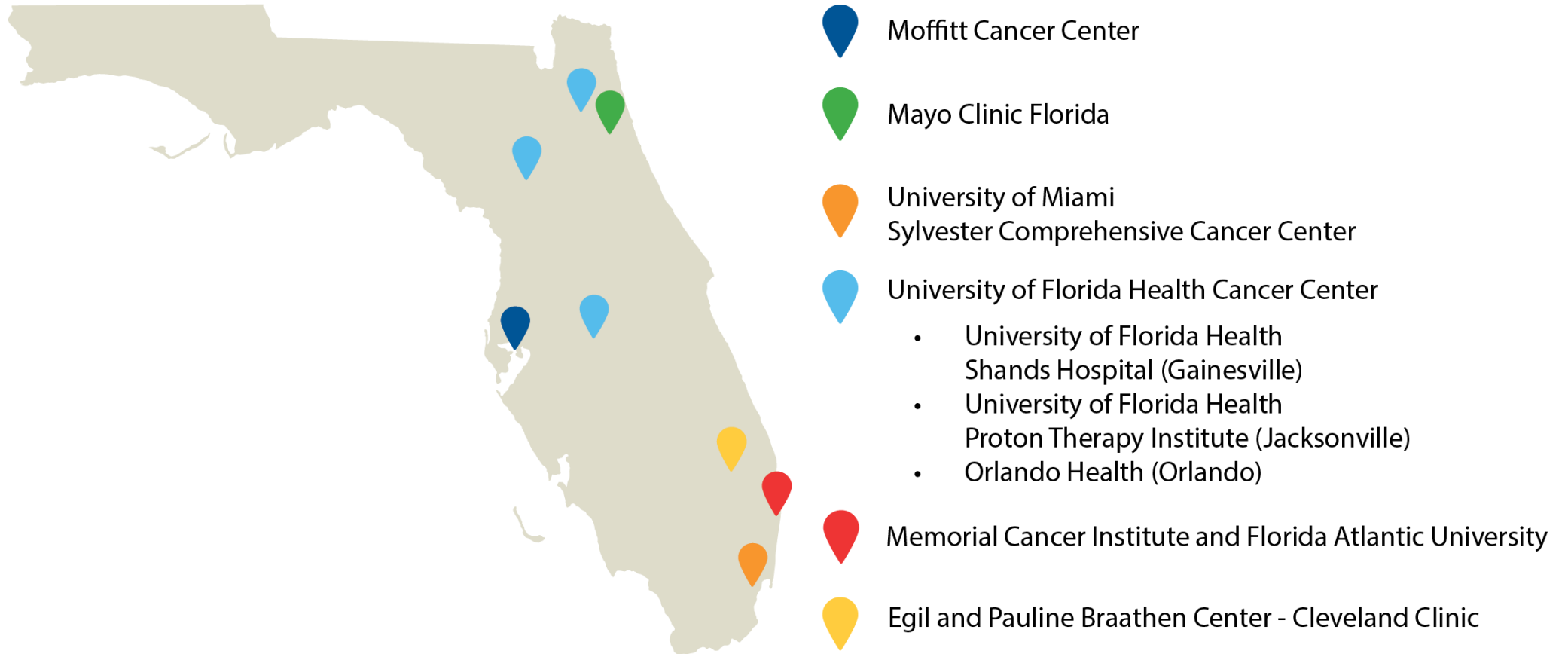
# Annual Spending for Tobacco-Related Communications



Sources: CDC, Campaign for Tobacco Free Kids, State of Florida



# Florida Cancer Centers of Excellence



Source: Florida Department of Health

## Florida Cancer Control & Research Advisory Council Membership

(January 2024)



**Chair**  
Clement Gwede,  
PhD, MPH, RN, FAAN  
Moffitt Cancer Center



**Vice Chair**  
Erin Kobetz, PhD, MPH  
Sylvester Comprehensive Cancer Center  
University of Miami



Senator Colleen Burton  
Senate President's  
Appointee



Representative  
Linda Chaney  
House Speaker's  
Appointee



Autumn Citta, ARNP  
Governor's Appointee



Christopher Cogle, MD  
Senate President's  
Appointee



Michael Diaz, MD  
Association of Community  
Cancer Centers



Paul Hull  
American Cancer  
Society



Joseph Ladapo, MD, PhD  
Florida's  
Surgeon General



Jessica MacIntyre  
DNP, MBA, APRN, AOCNP  
Florida Nurses Association



Merritt Martin  
House Speaker's  
Appointee



Mitchell F. Peabody, DO  
Florida Osteopathic  
Medical Association



Nitesh Paryani, MD  
Florida Medical  
Association



Luis Raez, MD  
Florida Hospital  
Association



Ramzi G. Salloum, PhD  
University of Florida  
Health Cancer Center

## CCRAB CONTACT INFORMATION:

**Bobbie McKee, PhD**  
Executive Director,  
Florida Cancer Control  
& Research Advisory Council  
Bobbie.Mckee@Moffitt.org

**Clement K. Gwede, PhD, MPH, RN, FAAN**  
Chair,  
Florida Cancer Control  
& Research Advisory Council  
Clement.Gwede@Moffitt.org

## FOR MORE INFORMATION CONTACT:

**CCRAB Website**  
<http://www.ccrab.org>

**Florida Cancer Plan 2020-2025**  
[www.ccrab.org/cancer-plan](http://www.ccrab.org/cancer-plan)

**Florida Cancer Data Systems (FCDS)**  
<https://fcds.med.miami.edu/inc/statistics.shtml>

**Florida Regional Community Cancer Collaboratives:**  
Northwest Region – [www.nwfcc.org](http://www.nwfcc.org)  
North Central Region – [www.ncfcancercontrol.org](http://www.ncfcancercontrol.org)  
Northeast Region – [www.hpcnef.org/programs/northeast-florida-cancer-control-collaborative/](http://www.hpcnef.org/programs/northeast-florida-cancer-control-collaborative/)  
East Central Region – [www.ecfcc.com](http://www.ecfcc.com)  
Southwest Region – [www.swflccc.weebly.com/about.html](http://www.swflccc.weebly.com/about.html)  
Southeast Region – [www.healthcouncil.org/sfcc](http://www.healthcouncil.org/sfcc)

**Florida Comprehensive Cancer Control Programs**  
<http://www.floridahealth.gov/diseases-and-conditions/cancer/cancer-control-florida.html>

**Florida Breast and Cervical Cancer Early Detection Program (BCCEDP)**  
<http://www.floridahealth.gov/diseases-and-conditions/cancer/breast-cancer/index.html>  
<http://www.floridahealth.gov/diseases-and-conditions/cancer/cervical-cancer/index.html>

**Florida Colorectal Cancer Control Program (CRCCP)**  
<http://www.floridahealth.gov/diseases-and-conditions/cancer/colon-cancer/index.html>

# THANK YOU TO OUR PARTNERS

