

Florida's Regional Cancer Control Collaboratives

Community Implementation Grants (CIG)
and Other Updates

C-CRAB Meeting, Spring 2024

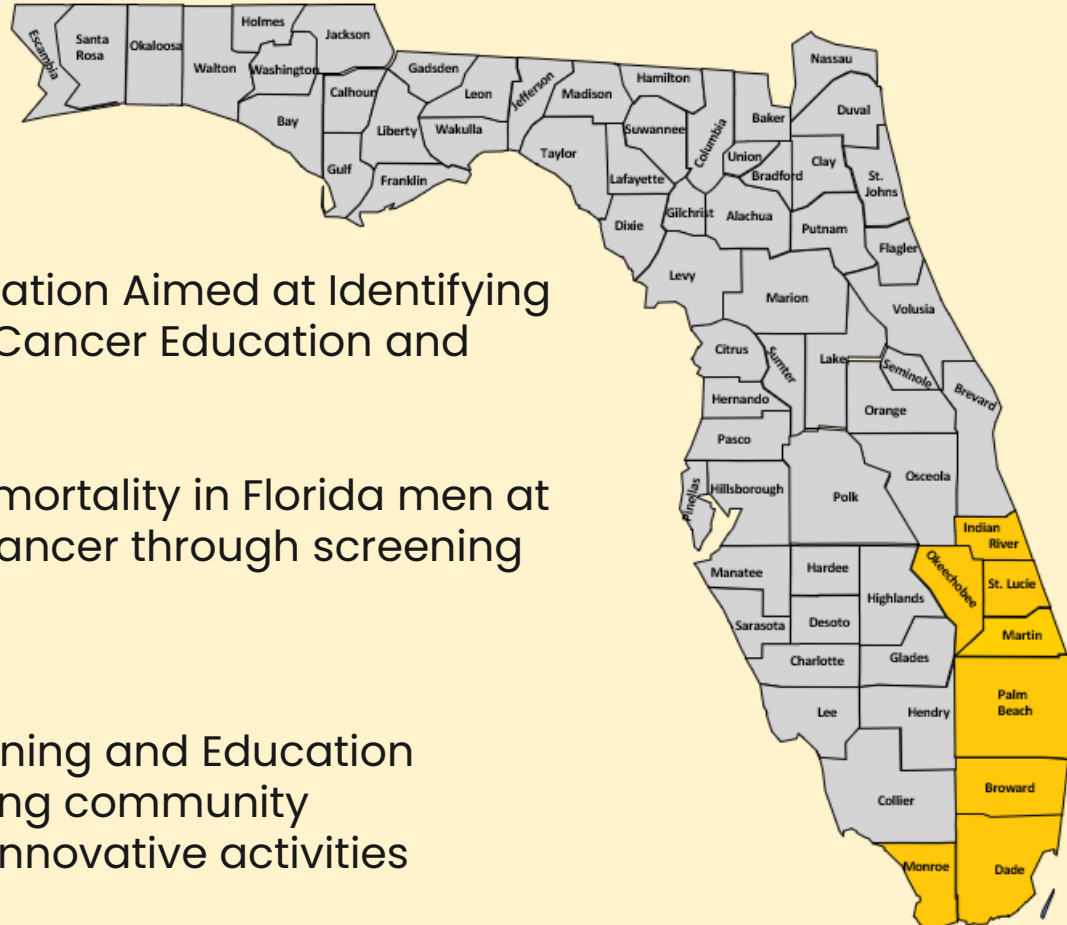


SOUTHEAST FLORIDA CANCER CONTROL COLLABORATIVE UPDATE

REGIONAL COORDINATOR:

Tiffany A. Albury, MPH, The Health Council of South Florida, Inc.

SEFCCC CIG UPDATES

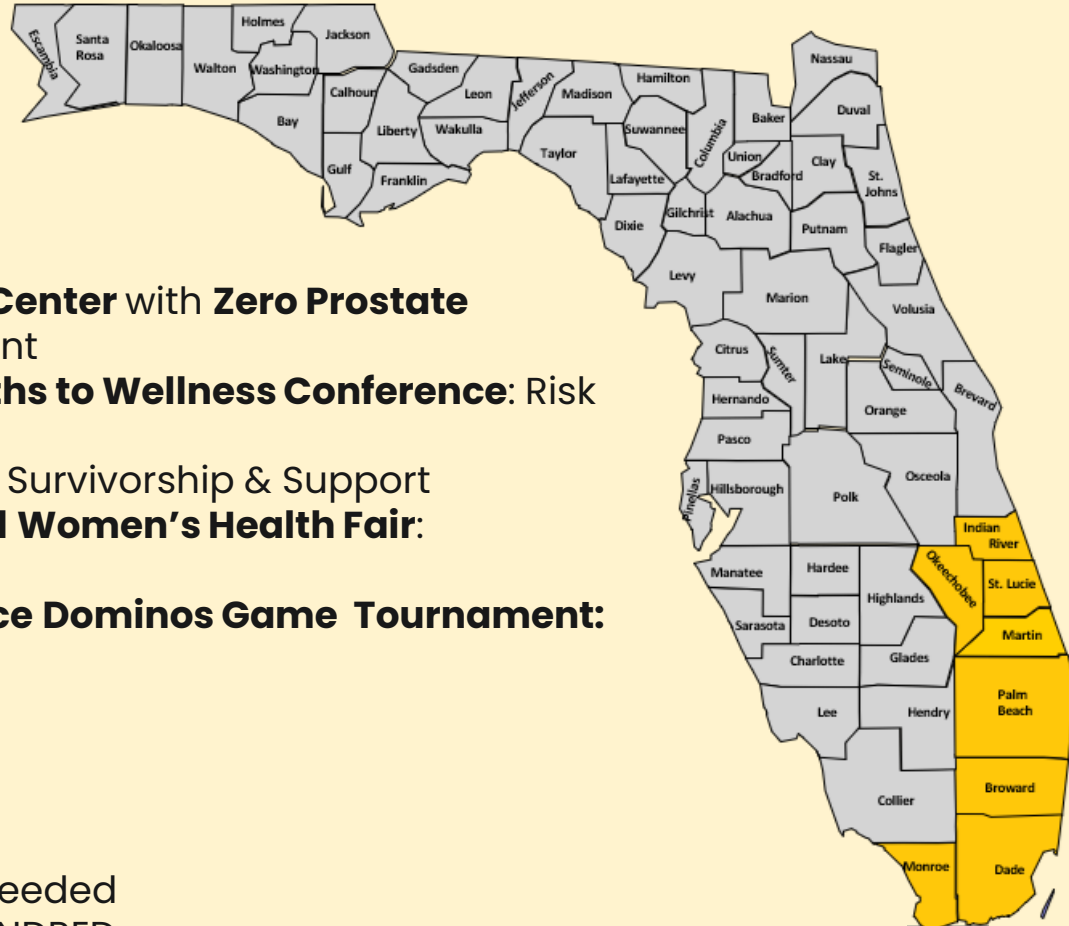


PROJECT NAME: Regional Collaboration Aimed at Identifying and Addressing Gaps to Prostate Cancer Education and Screening

GOAL 13: Reduce prostate cancer mortality in Florida men at high risk for aggressive prostate cancer through screening and early detection.

- **Focus Areas:** Awareness, Screening and Education
- **Key Activities:** Outreach, building community connections, and engaging in innovative activities

PROJECT HIGHLIGHTS



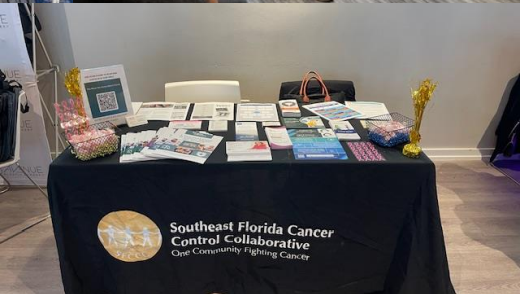
Project Activities:

- Sylvester Comprehensive Cancer Center with Zero Prostate Cancer** : Education & Screening Event
- Annie Appleseed Project: Many Paths to Wellness Conference:** Risk reduction & Prevention
- Fresh Start Prostate Cancer Group:** Survivorship & Support
- PBS South Florida – Health Channel Women’s Health Fair:** Education & Outreach
- South Florida Caribbean Conference Dominos Game Tournament:** Education, Awareness & Innovation

Lessons Learned:

- Community collaboration is key
- Seek unique opportunities
- Use what already exists, Modify as needed
- Impact can be felt in ONE or ONE HUNDRED

MORE TO COME...



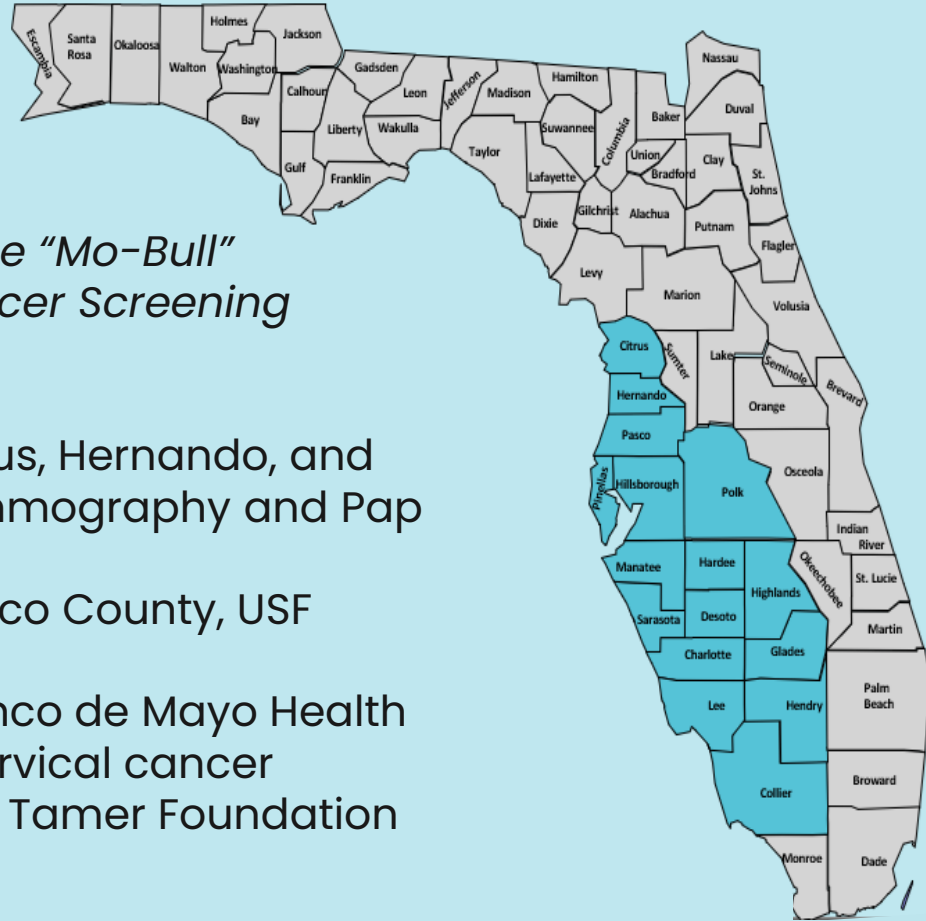
02

SOUTHWEST FLORIDA CANCER CONTROL COLLABORATIVE UPDATE

REGIONAL COORDINATOR:

Jennifer Kue, PhD, University of South Florida

SWFCCC CIG UPDATE



Community Implementation Award: *The “Mo-Bull” Community Breast and Cervical Cancer Screening Project*

- **Aim** – Increase BCC screening in Citrus, Hernando, and Pasco Counties through mobile mammography and Pap test screenings
- **Community Partners** – FBCCEDP Pasco County, USF College of Nursing, HPV workgroup
- **Upcoming Community Activity** – Cinco de Mayo Health Expo, May 4th in Hernando County; cervical cancer screening in partnership with Cancer Tamer Foundation and FBCCEDP

OTHER SWFCCC UPDATES

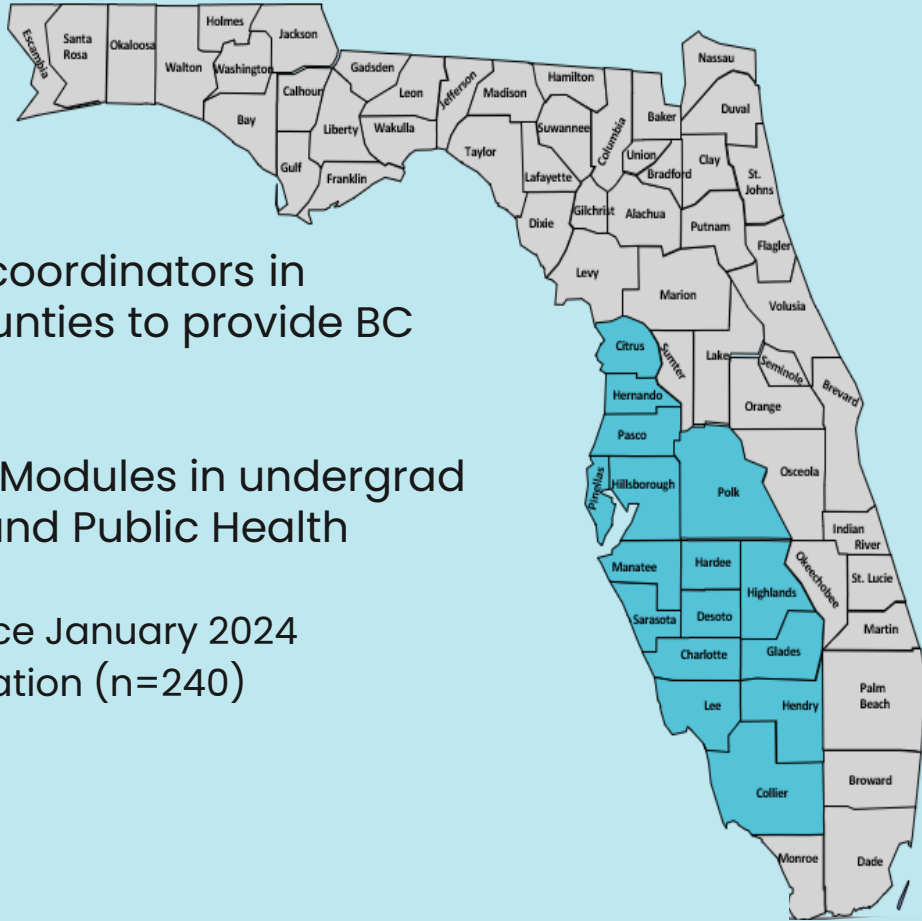


SWFCCC Goals:

- *Work collaboratively with mobile mammography programs in catchment area to expand access to early breast cancer detection and breast health education.*
- *In conjunction with county tobacco control partners, we will conduct academic detailing initiatives to provide technical assistance to healthcare organizations and providers in implementing systems changes that institutionalize tobacco use screening and intervention.*

OTHER SWFCCC UPDATES

- Collaborate with FBCCEDP regional coordinators in Hillsborough, Pinellas, and Pasco counties to provide BC screening and resources.
- Integration of AHEC Tobacco Online Modules in undergrad nursing courses (Complex Health 1 and Public Health Nursing).
 - 514 students completed training since January 2024
 - Pharmacotherapy of Smoking Cessation (n=240)



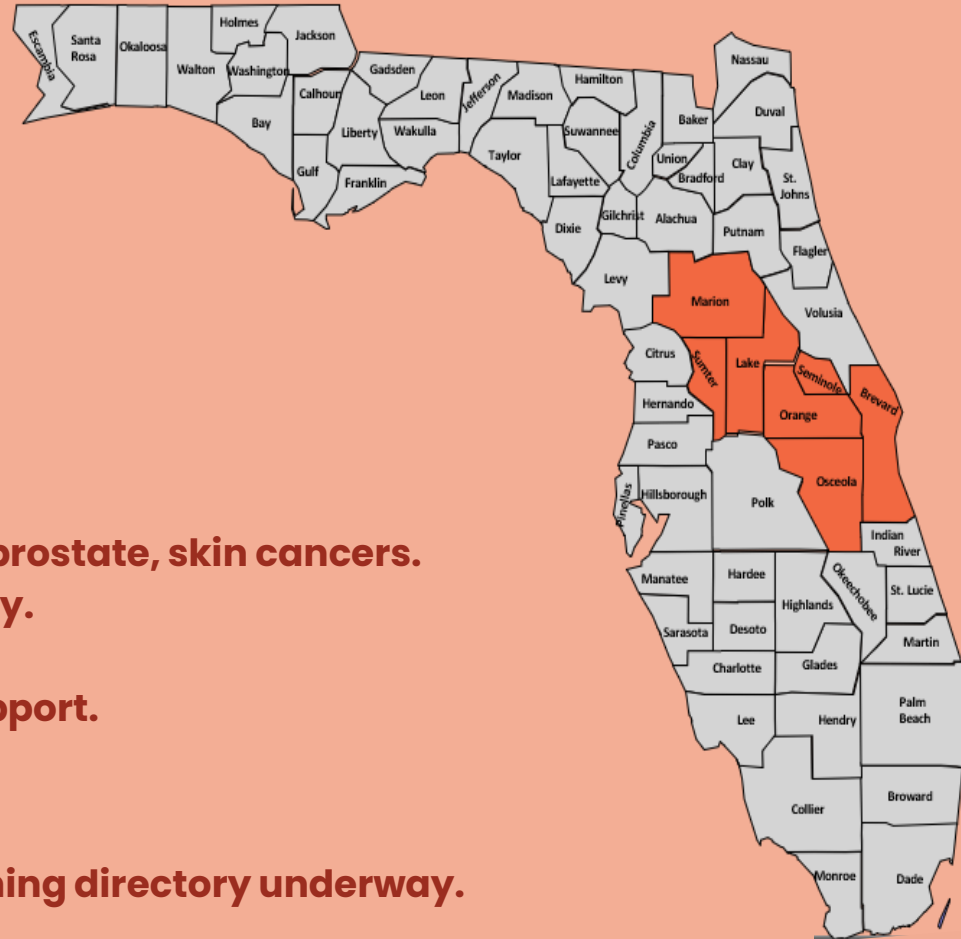
03

EAST CENTRAL FLORIDA CANCER COLLABORATIVE UPDATE

REGIONAL COORDINATOR:

Ken Peach, MBA, MHA, Health Council of East Central Florida, Inc.

ECFCCC CIG UPDATE



- **Project:**



- **Alignment with the Cancer Plan**

- **Cervical, lung, breast, colorectal, prostate, skin cancers.**
- **Improve cancer prevention literacy.**
- **Facilitate cancer screenings.**
- **Connect cancer survivors with support.**

- **Updates**

- **Website content, branding, screening directory underway.**

ECFCCC CIG UPDATE

- **Project:**



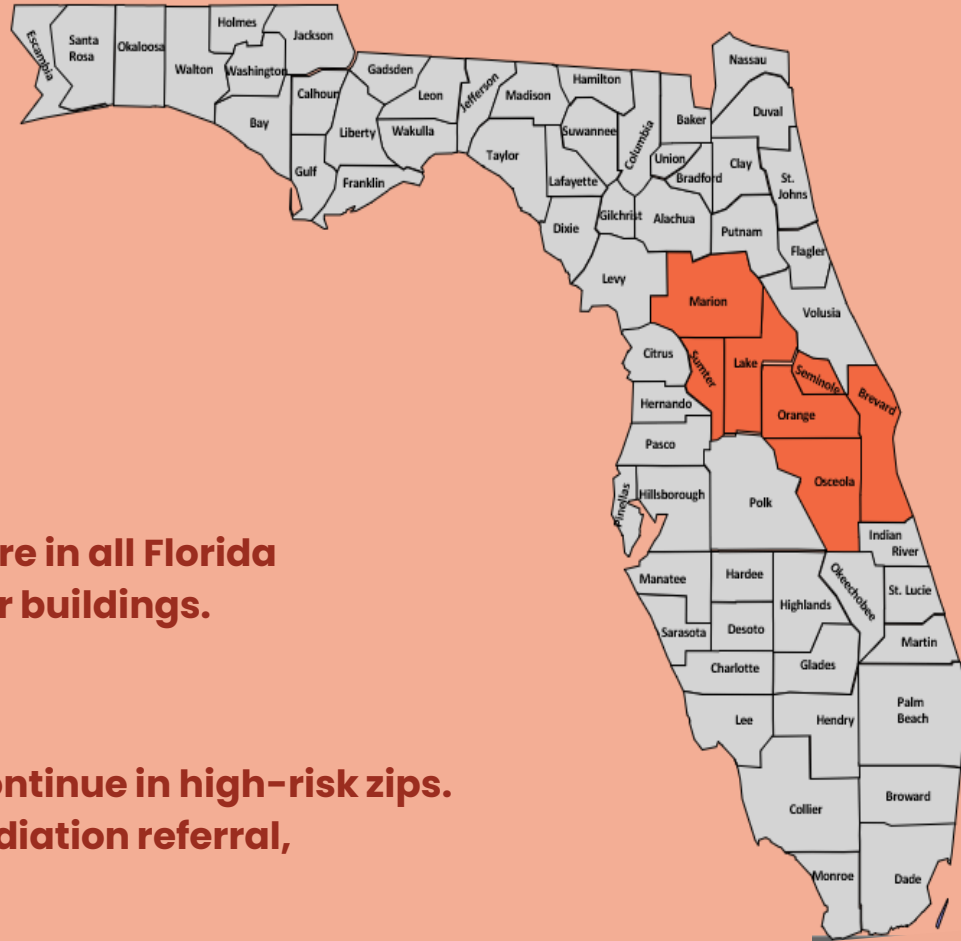
Home Radon Screening

- **Alignment with the Cancer Plan**

- **Goal 9 – Reduce radon gas exposure in all Florida households, workplaces, and other buildings.**

- **Updates**

- **Screenings began last year and continue in high-risk zips.**
- **Service includes initial screen, mediation referral, outcomes call.**
- **80 visits to be completed in 2024.**





**North Central Florida Cancer
Control Collaborative**
One Community Fighting Cancer

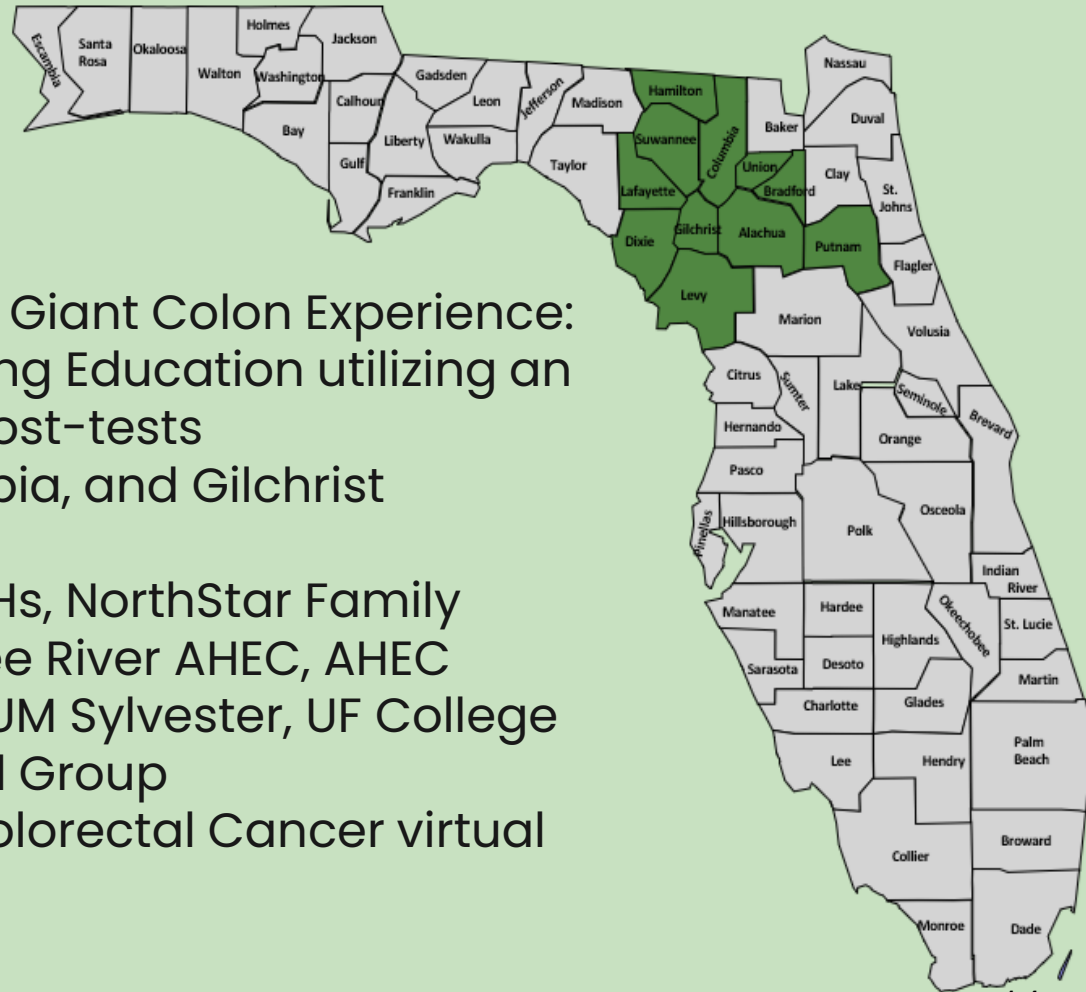
REGIONAL COORDINATOR:

Lindsey K. Redding, MPH, WellFlorida Council

ASSISTANT REGIONAL COORDINATOR:

Debbie Reich, MA, WellFlorida Council

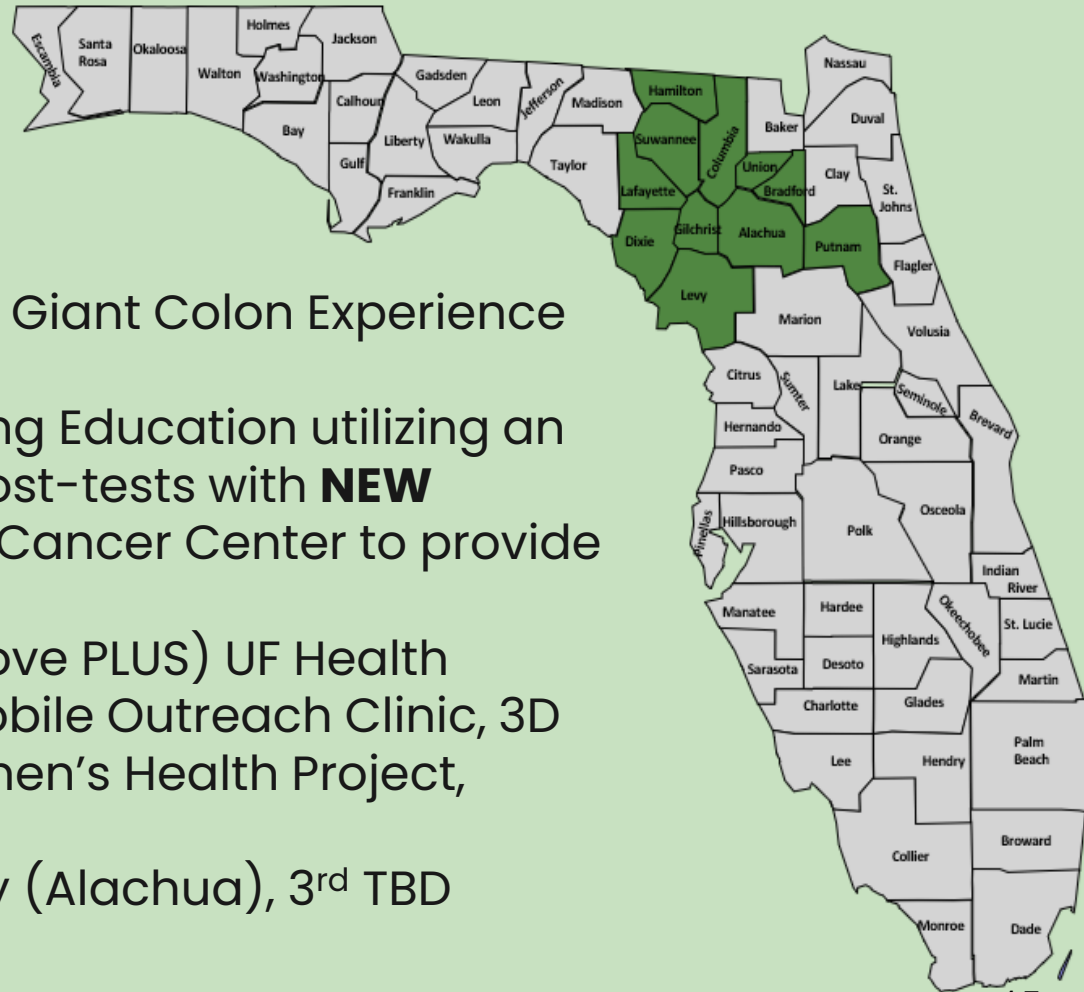
NCFCCC CIG UPDATE: YEAR 2023



2023 CIG Funded Small Town, Giant Colon Experience:

- Colorectal Cancer Screening Education utilizing an inflatable colon, pre and post-tests
- Events in: Bradford, Columbia, and Gilchrist Counties
- Partnerships with local DOHs, NorthStar Family Resource Center, Suwannee River AHEC, AHEC Scholars Program, Moffitt, UM Sylvester, UF College of Medicine, Palms Medical Group
- A Strategic Approach to Colorectal Cancer virtual training

NCFCCC CIG UPDATE: YEAR 2024



2024 CIG Funded Small Town, Giant Colon Experience 2.0:

- Colorectal Cancer Screening Education utilizing an inflatable colon, pre and post-tests with **NEW** partnership with UF Health Cancer Center to provide **FIT screens**
- Partnerships: (all of the above PLUS) UF Health Cancer Center, Civcom, Mobile Outreach Clinic, 3D Mammography, Rural Women's Health Project, Palms Medical Group
- Events: April (Gilchrist), May (Alachua), 3rd TBD

LEVERAGING THE INFLATABLE COLON

- ECFCCC and Orlando Health (2 events reached over 100 people)
- Colon Fest in Citrus County (30+ people educated)
- Alachua County Health Event with county staff, over 150 people educated
- Health 360 at Florida Gateway College, 80 people



05

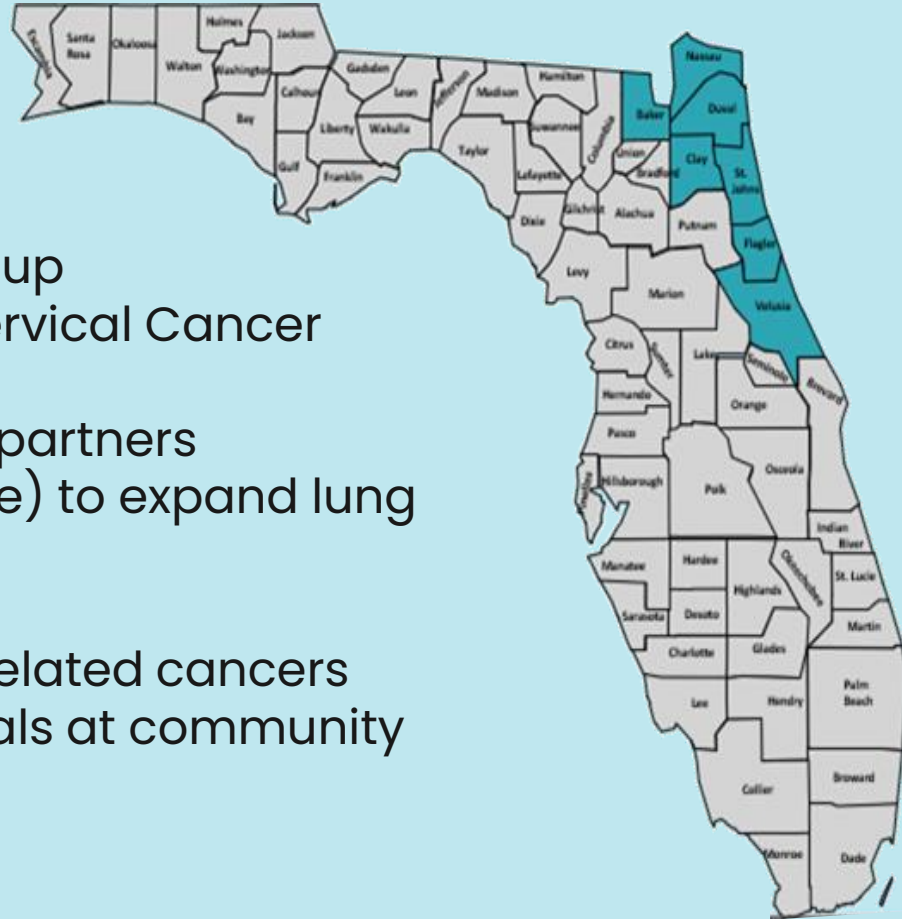
NORTHEAST FLORIDA CANCER CONTROL COLLABORATIVE UPDATE

REGIONAL COORDINATORS:

Tonia Harris, MBA | Caitlyn Kennedy, TTS
Northeast Florida Area Health Education Center, Inc.

NEFCCC UPDATES

- Revamp Lung LDCT Scan work group
- Partner with Florida Breast and Cervical Cancer Early Detection Program
- Increase NEFCCC non-traditional partners
- Partner with Veterans (Heroes' Mile) to expand lung cancer education
- Participate in Buddy Bus events
- Increase awareness of tobacco-related cancers through the distribution of materials at community events



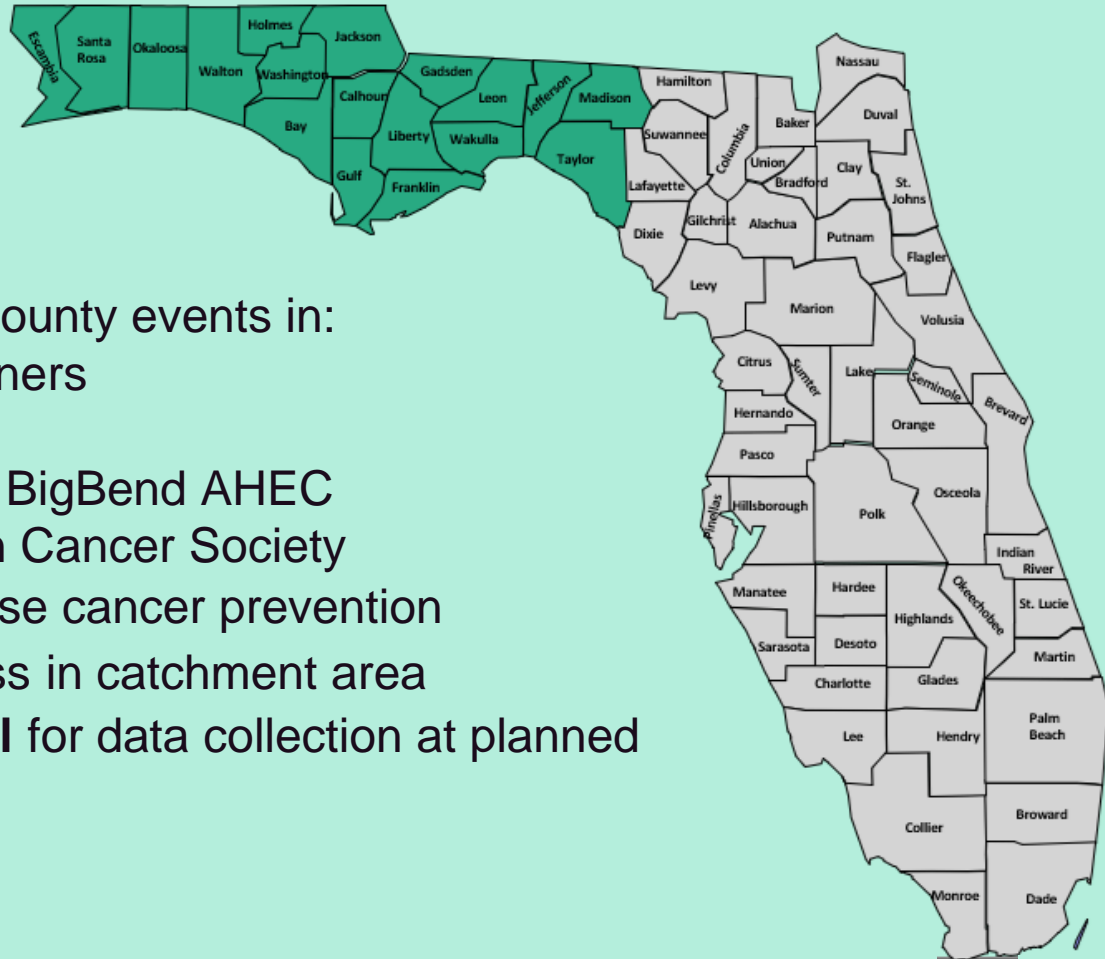


NORTHWEST FLORIDA CANCER CONTROL COLLABORATIVE UPDATE

REGIONAL COORDINATORS:

Justice Mbizo, DrPH | Collette Davis, PhD
University of West Florida

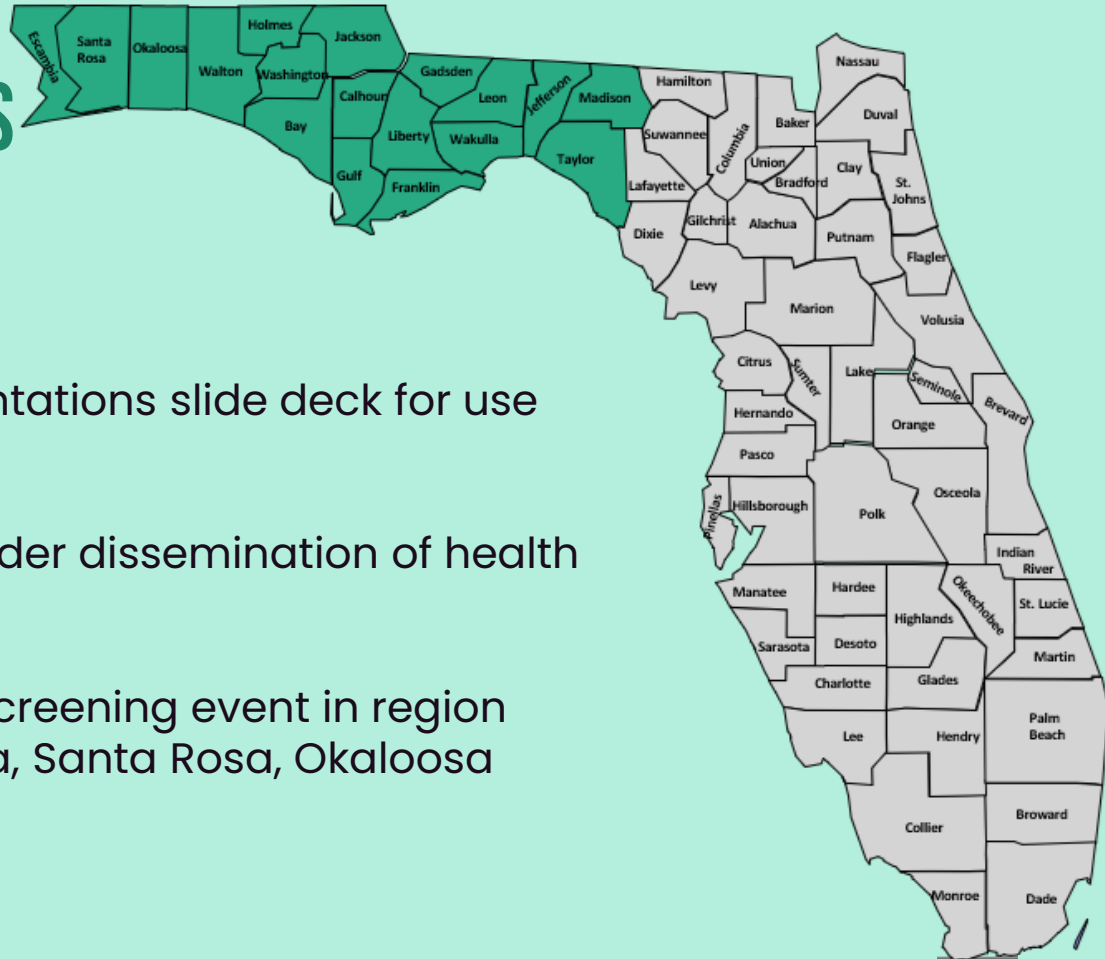
NWFCCC CIG UPDATE



In planning stages of two area county events in:

- Leon County Additional Partners
- Taylor County
- Continued collaboration with BigBend AHEC
- In discussions with American Cancer Society
 - for Partnership to increase cancer prevention education and awareness in catchment area
- Secured **UWF IRB approval** for data collection at planned events

OTHER NWFCCC UPDATES



- ❑ Creating educational presentations slide deck for use at area gatherings
- ❑ Hiring student workers for wider dissemination of health literacy resources
- ❑ Exploring options to host a screening event in region one county areas (Escambia, Santa Rosa, Okaloosa and Walton counties)

**QUESTIONS?
THANKS!**

